

TSI-1569-6 JAVA Interface for ISDN Termination Units

FEATURES

- Simplifies test set up and operation of the TELESYNC TSI-1569 and TSI-2069 ISDN Termination Units
- Provides graphical interface, eliminating the need to look up and type command line control instructions
- Pull-down menus and check box selection speeds test set up
- View In-Progress test activity

DESCRIPTION

The TSI-1569-6 JAVA Interface provides an easy to use, intuitive graphical interface to set up, run and view test results from the TELESYNC TSI-1569 ISDN Termination Unit and the TSI-2069 E1 ISDN Termination Unit. The ISDN Termination Units may also be controlled via command line control instructions. However, the JAVA Interface simplifies the test setup and operation through the use of pull down menus, check boxes and button selections.

Alarms

- Master LOS
- Master LOF
- Master AIS
- Master YEL
- D-Channel

Channels in use

1 2 3 4 5 6
7 8 9 10 11 12
13 14 15 16 17 18
19 20 21 22 23 D

Tst Num	Pattern	Called PhoneNum	I f	lst Chn	Num Chs	Rate /Chn	Duration hhh:mm:ss	In Prog	In Sync	Bit Errs	ES	Sync Loss
02	2047	5551001	0	2	1	56K	0044:58:14	Yes	Yes	1	1	0
09	2047	5551001	0	9	1	56K	0044:58:14	Yes	Yes	0	0	0
10	2047	5551001	0	10	1	56K	0044:58:14	Yes	Yes	0	0	0
14	2047	5551001	0	14	1	64K	0044:58:14	Yes	Yes	1	1	0
15	2047	5551001	0	15	1	64K	0044:58:14	Yes	Yes	0	0	0
16	2e20	5551001	0	16	1	64K	0044:51:45	Yes	Yes	0	0	0
18	2047	5551001	0	18	1	56K	0044:58:14	Yes	Yes	0	0	0
19	2e20	5551001	0	19	1	64K	0044:58:14	Yes	Yes	0	0	0
20	2047	5551001	0	20	1	56K	0044:58:14	Yes	Yes	0	0	0
21	2047	5551001	0	21	1	56K	0044:58:13	Yes	Yes	0	0	0

```

Switch to Codeset 5
IE = 52a      80 80 01 03 9e 05 46 72 6f 6d 20 8b 0b 55 6e 61 76 61 69
              62 6c 65 80 01 01 85 13 4e 6f 74 20 65 6e 64 2d 74 6f
              2d 65 6e 64 20 49 53 44 4e 80 01 29

<-OUT CONNECT CRV=00034 (Dest) Prot=0.931 08:55:20:624
Channel_Id a9 83 91 (Excl,Intf=0,Chan=17)

IN--> CONN_ACK CRV=00034 (Orig) Prot=0.931 08:55:20:676

IN--> DISCONNCT CRV=00034 (Orig) Prot=0.931 08:55:25:494
Cause : Normal call clearing (Coding=0,Loc=3)
Switch to Codeset 5
IE = 52a      80 80 01 50

<-OUT RELEASE CRV=00034 (Dest) Prot=0.931 08:55:25:520
Cause : Normal, unspecified (Coding=0,Loc=0)

IN--> REL_COMP CRV=00034 (Orig) Prot=0.931 08:55:25:546
    
```

OPERATION

From the main operating screen, the operator can:

- Check the status of the network interface and alarms.
- Review tests in progress and active calls.
- Review the D-channel log for network protocol analysis.
- Configure the TSI-1569 Table which determines processing of incoming calls.
- Initiate and terminate test calls.

The Main Operating screen displays information on test status, D-channel log, alarms, Channels in use and Table Setup. Buttons at the edge of the screen allow selection of various functions related to the test.

If **System** is selected in the top left corner of the Main screen, a window opens with nine selections as shown. Selecting any of the nine items, opens an additional window providing further information or user selections. Examples of the nine choices, **Status, Event Log, Calls, Call Log, Change Name/ID, Command Line, Table Setup, Set Date/Time** and **System Settings**.

Selecting **System Settings** opens a window to change the system configuration of the TSI-1569. The configuration settings are normally entered during the installation of the TSI-1569 and should not be changed unless required. Changes to the some configurations, such as **Switch Type, TE or NT**, may cause alarm conditions to occur while others, such as **Number Cards, Default Pattern**, may change the operation of the TSI-1569.

The screenshot displays the Telesync 1569 software interface. The main window is titled "Telesync 1569 -- TELESYNC SWITCH" and shows a menu with "System Settings" selected. A secondary window, "System Settings -- TELESYNC SWITCH", is open, displaying a warning message: "Warning: Modification of system settings can effect network performance. These settings should only be modified by a qualified technician." The settings window includes fields for System Mode (TEST), D-Channel (NORMAL), Backup D-Channel (OFF), Number Cards (1), Number Interfaces (1), TE or NT (TE), My Phone Number, Negotiate Channel (OFF), Switch Type (DMS), Default Pattern (Loop), Transmit Timing (LOOPED), and FrameRelay Poll (4). The background window shows a table of test results and a log of network events.

Tst Num	Pattern	Called PhoneNum	I f	lst Chn	Num Chs	Rate /Chn	Duration hhh:mm:ss	In Prog	In Sync	Bit Errs	ES	Sync Loss
02	2047	5551001	0	2	1	56K	0044:58:14	Yes	Yes	1	1	0
09	2047	5551001	0	9	1	56K	0044:58:14	Yes	Yes	0	0	0
10	2047	5551001	0	10	1	56K	0044:58:14	Yes	Yes	0	0	0
14	2047	5551001	0	14	1	56K	0044:58:14	Yes	Yes	0	0	0
15	2047	5551001	0	15	1	56K	0044:58:14	Yes	Yes	0	0	0
16	2e20	5551001	0	16	1	56K	0044:58:14	Yes	Yes	0	0	0
18	2047	5551001	0	18	1	56K	0044:58:14	Yes	Yes	0	0	0
19	2e20	5551001	0	19	1	56K	0044:58:14	Yes	Yes	0	0	0
20	2047	5551001	0	20	1	56K	0044:58:14	Yes	Yes	0	0	0
21	2047	5551001	0	21	1	56K	0044:58:14	Yes	Yes	0	0	0

The **Status** report top section displays Layer 1 errors. The middle section shows Layer 2 and the bottom portion Layer 3.

Open the **Table Setup** and add or delete entries to configure the table as required for this location.

TSI-1569 Status -- TELESYNC SWITCH

I N L L A Y					P R I				L L A Y					D X C			
t	0	0	I	E	LOS	LOF	CRC6	BPV	0	0	I	E	LOS	LOF	CRC6	BPV	
f	S	F	S	L	SECS	SECS	ERRS	ERRS	S	F	S	L	SECS	SECS	ERRS	ERRS	
0					4	62	68	17085	-	-	-	-	-	-	-	-	

Layer2 Link : Established
 Received : 14 SABME's, 11 UA's, 0 DISC's, 0 DM's
 Transmitted : 33 SABME's, 14 UA's, 0 DISC's, 11 DM's

Layer 3 Receives		Layer 3 Transmits	
Facility	0	Facility	0
Register	0	Register	0
Service	0	Service	0
ServiceAck	0	ServiceAck	0
Restart	0	RestartAck	0
Setup	137	Setup	66
Progress	20	Progress	0
CallProceeding	64	CallProceedng	0
Alerting	28	Alerting	0
...
...	137
...	58
...	3
...	0
...	0
...	0
...	50
...	132
...	53

Buttons: Reset, Close

Table Setup -- TELESYNC SWITCH

Number	Type	Parameters
5551001	NORMAL	Loop(1)
5551007	HANDSET	
5551009	BONDLOOP	

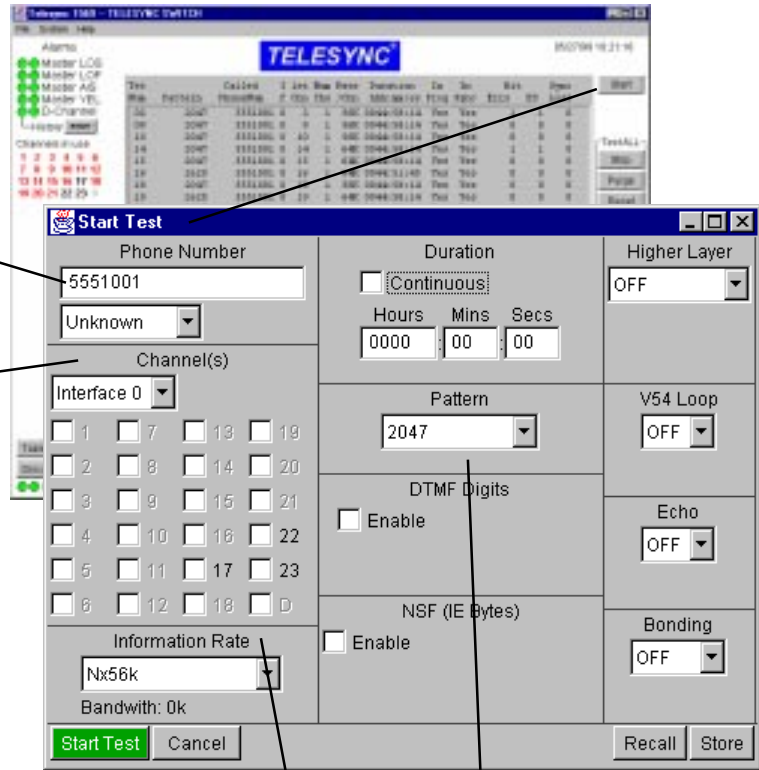
Buttons: Add, Change, Delete, List by number (dropdown), Done

Press the **START** test button on the top right corner of the main screen and the **Start Test** window opens. From this window, all variables associated with a test may be selected and entered.

Enter **Phone Number** and **Type**

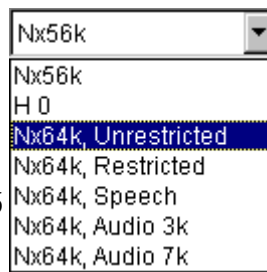
Select **Channel(s)**

Interface 0 is the default selection for the Master card. Check the DSO channels to be used for the test call. The lowest number channel becomes the Test Number on the main screen viewing area.



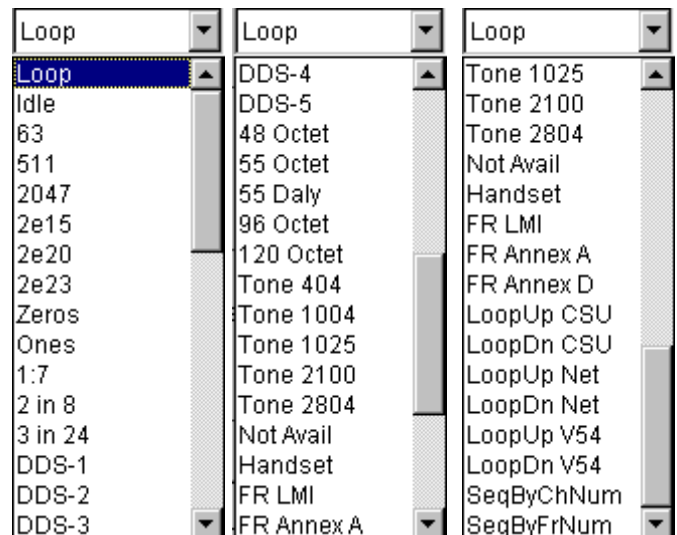
Set **Information Rate**

Click on the arrow beside the **Information Rate** selection and the choice menu opens: Move the cursor to highlight the selected rate and then click on the rate to enter it into the selection window. Note that if **H0** is selected 6 channels must be selected in the channels selection area.



Set **Pattern**

On the **Start Test** Screen, click on the arrow beside the pattern selection box to open the menu of patterns.



If the **Test** is highlighted on the top menu, the messages associated with the test call are highlighted in the log area on the Main screen:

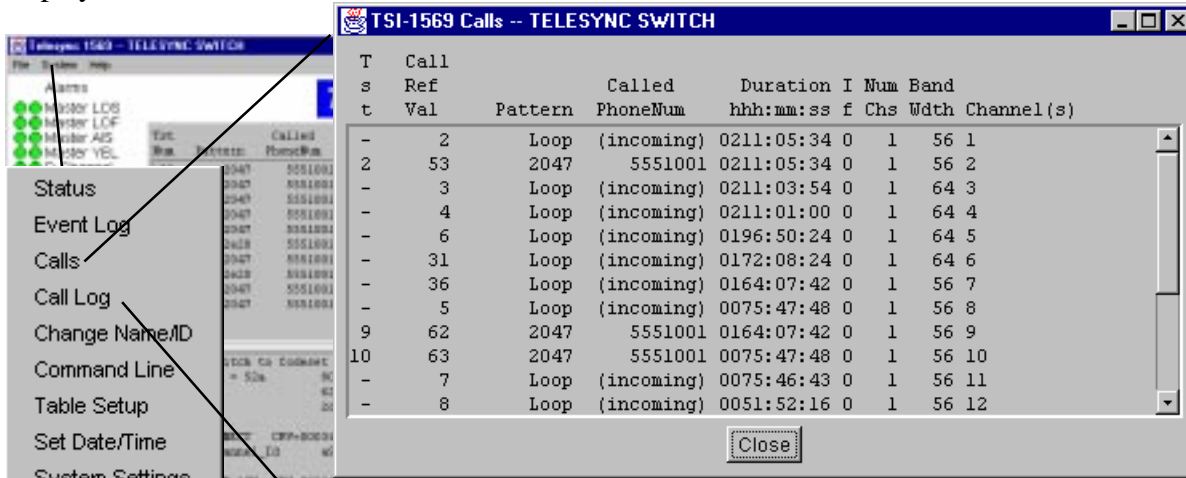
The screenshot shows the Telesync 1569 software interface. The title bar reads "Telesync 1569 -- TELESYNC SWITCH". The main window contains a menu bar (File, System, Help), a status bar (03/25/99 14:17:37), and a central display area. On the left, there are "Alarms" (Master LOS, LOF, AIS, YEL, D-Channel) and "Channels in use" (1-23). The central display shows a table of test results with columns: Tst Num, Pattern, Called PhoneNum, I f, l st, Num Chn, Rate /Chn, Duration hhh:mm:ss, In Prog, In Sync, Bit Errs, ES, and Sync Loss. The table lists tests 01 through 15, with test 05 highlighted in blue. Below the table, a detailed log for "Test 5" is shown, with its entries also highlighted in blue. The log entries include: "IN--> PROCEEDNG CRV=00060 (Dest) Prot=Q.931 14:02:42:572", "IN--> SETUP CRV=00007 (Orig) Prot=Q.931 14:02:42:572", "<-OUT CONNECT CRV=00007 (Dest) Prot=Q.931 14:02:42:624", "IN--> CONNECT CRV=00060 (Dest) Prot=Q.931 14:02:42:676", and "<-OUT CONN ACK CRV=00060 (Orig) Prot=Q.931 14:02:42:702". On the right side, there are buttons for "Start", "Test 5", "Detail", "Stop", "Purge", "Reset", "Errs 1", "Ins Errs", "Log", "Purge", "Clear", "Brief", and "Print". At the bottom left, there are buttons for "Table Setup", "Disconnect", and "I/O".

Tst Num	Pattern	Called PhoneNum	I f	l st	Num Chn	Rate /Chn	Duration hhh:mm:ss	In Prog	In Sync	Bit Errs	ES	Sync Loss
01	Loop	5551001	0	1	1	64K	0000:15:32	Yes	Yes	0	0	0
04	2047	5551001	0	4	1	64K	0000:15:06	Yes	Yes	0	0	0
05	DDS-2	5551001	0	5	1	64K	0000:14:51	Yes	Yes	0	0	0
15	2047	5551001	0	15	1	64K	0001:00:00	No	Yes	0	0	0

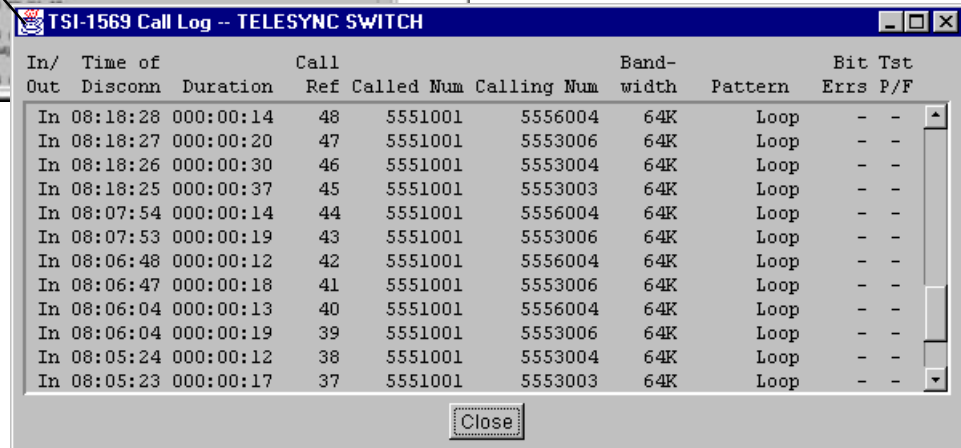
```

Called_Num (Unknown) 5551001
IN--> PROCEEDNG CRV=00060 (Dest) Prot=Q.931 14:02:42:572
Channel_Id a9 83 85 (Excl,Intf=0,Chan=5)
IN--> SETUP CRV=00007 (Orig) Prot=Q.931 14:02:42:572
Bearer_Cap 88 90 (Unrestrict,Rate=64K)
Channel_Id a9 83 86 (Excl,Intf=0,Chan=6)
Calling_Num (National) 55555555
Called_Num (Unknown) 5551001
<-OUT CONNECT CRV=00007 (Dest) Prot=Q.931 14:02:42:624
Channel_Id a9 83 86 (Excl,Intf=0,Chan=6)
IN--> CONNECT CRV=00060 (Dest) Prot=Q.931 14:02:42:676
IN--> CONN_ACK CRV=00007 (Orig) Prot=Q.931 14:02:42:676
<-OUT CONN_ACK CRV=00060 (Orig) Prot=Q.931 14:02:42:702
  
```

When **Calls** is selected a window opens that displays current calls. If a call is active, the test number, call reference value, pattern, called phone number, duration of call, interface number, total bandwidth and channels used are displayed.



The **Call Log** screen shows the log of the last 50 calls as shown in the example. Call Log information is displayed after the call is disconnected.



SYSTEM REQUIREMENTS

Pentium 100 MHz minimum

3-1/2" floppy drive

32 MB RAM

10BaseT Ethernet or 10Base2

3 MB of hard disk space

Operating System

Windows95™, Windows 98™ or

WindowsNT™

Unix available on special order

TELESYNC reserves the right to update the product specifications without notice.

ORDERING INFORMATION

TSI-1569-6 JAVA Interface

(1.44 MB Diskettes)

Copyright TELESYNC, Inc., August, 1999

TELESYNC

5555 OAKBROOK PARKWAY • SUITE 110 • NORCROSS, GA 30093
PHONE: (770) 246-9662 • FAX (770) 246-9733 • www.telesync.com